

Home Tour: A Hotel-Inspired Penthouse In Luxembourg With Elegant, Feminine Touches



The living room is ingeniously connected to the study via a set of custom-designed pivot doors



By **Cheryl Lai-Lim**

June 22, 2021

“It’s as if she’s (the owner) staying in the best hotel suite—one that’s just made for her,” says designer Ina Rinderknecht; see the stunning penthouse that she designed in Luxembourg [here](#).

High above the streets of Gasperich, [Luxembourg](#), lies a peaceful urban sanctuary. Designed by [Ina Rinderknecht](#), the spacious penthouse is made up of two top-floor units that were purchased together by the client. The amalgamated penthouse offers a new layout composition alongside an extended rooftop terrace that runs the entire length of both units.

Rinderknecht, who helms her eponymous design studio, was receptive to her globetrotting client’s requests from the get-go. “(Our client) wanted a space that is well-structured, uncluttered, well-organised, alongside a free and unobstructed flow,” explains Rinderknecht.



Interior designer Ina Rinderknecht

Before the pandemic, the client frequently traveled to the United States and Singapore. She desired a safe haven that would imbue a sense of calm when she returned home to Luxembourg—a request that Rinderknecht and her team acceded to by creating a warm, airy, and spacious home.

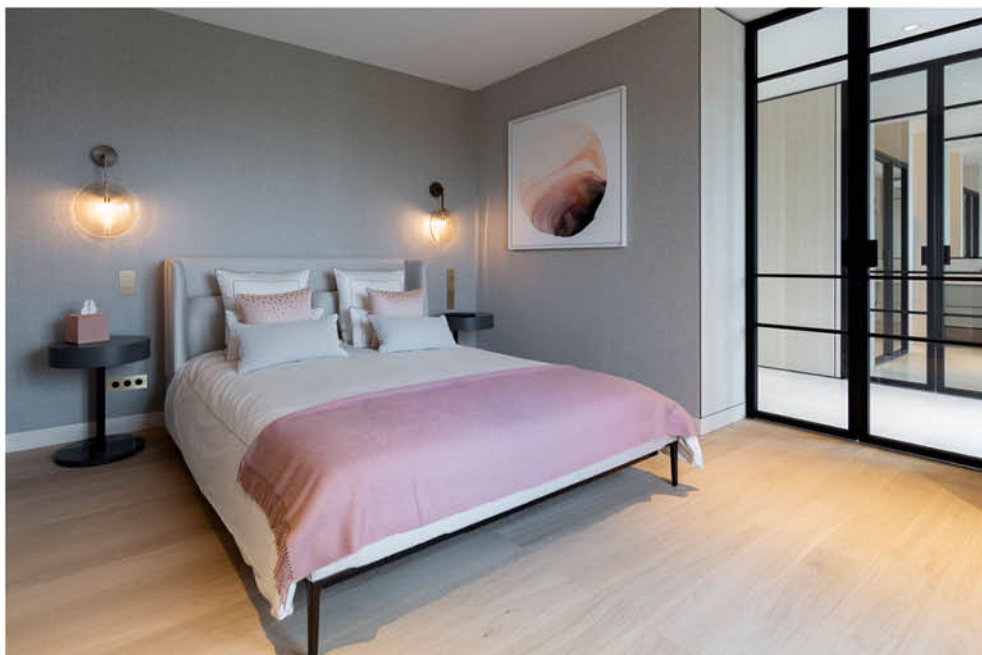
“The client’s lifestyle asked for a home that would act as a sanctuary for her,” says Rinderknecht. “The space planning was thus tailored to her lifestyle. It’s as if she’s staying in the best hotel suite—one that’s just made for her. The space planning was an essential part of our design to create interesting views within the penthouse.”



The bathroom exudes an idyllic sense of serenity

The connected ensuite bathroom extends the home’s elegant look with its monochromatic scheme. The walls are clad with cream-coloured limestone from Salvatori, accompanying more bespoke furnishings from Rinderknecht such as the shower door, sink unit, and bathroom mirror. Glass mosaics from Ann Sacks liven up the bathroom walls.

“We loved using some distinct highlights within our monochromatic design scheme that would spice up our quiet design,” says Rinderknecht. “It creates a focal point within our monochromatic scheme through texture.”



Glass doors custom designed by Rinderknecht offers a peek into the bedroom, which features a Joyce Niche bed from Wittmann, Raff bedside tables by Meridiani, and an artwork by Ilaria Franzis